

Instructions to Run HSPICE

Step 1.

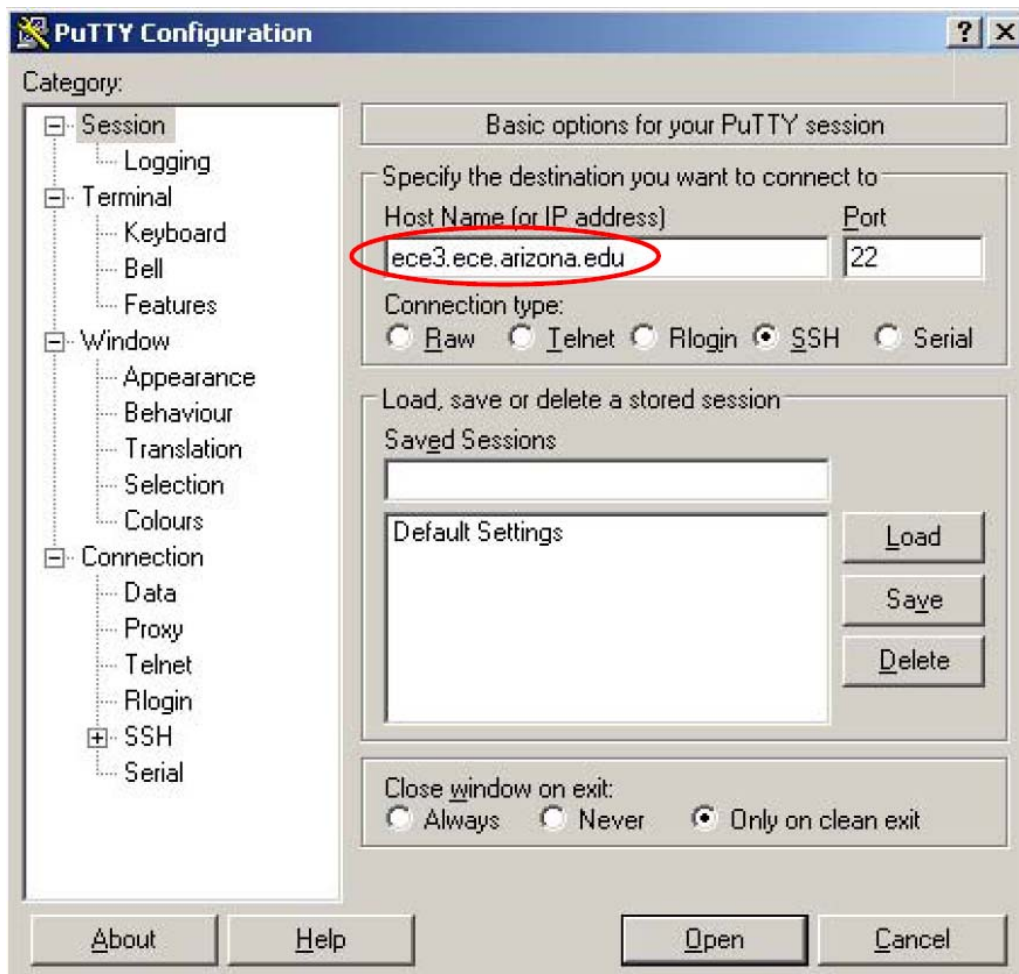
Download SSH client software: [Putty shell client](#) and [WinSCP FTP client](#).

(Link: <https://sitelicense.arizona.edu/ssh/index.shtml>)

Note: This site requires UA NetID authentication.

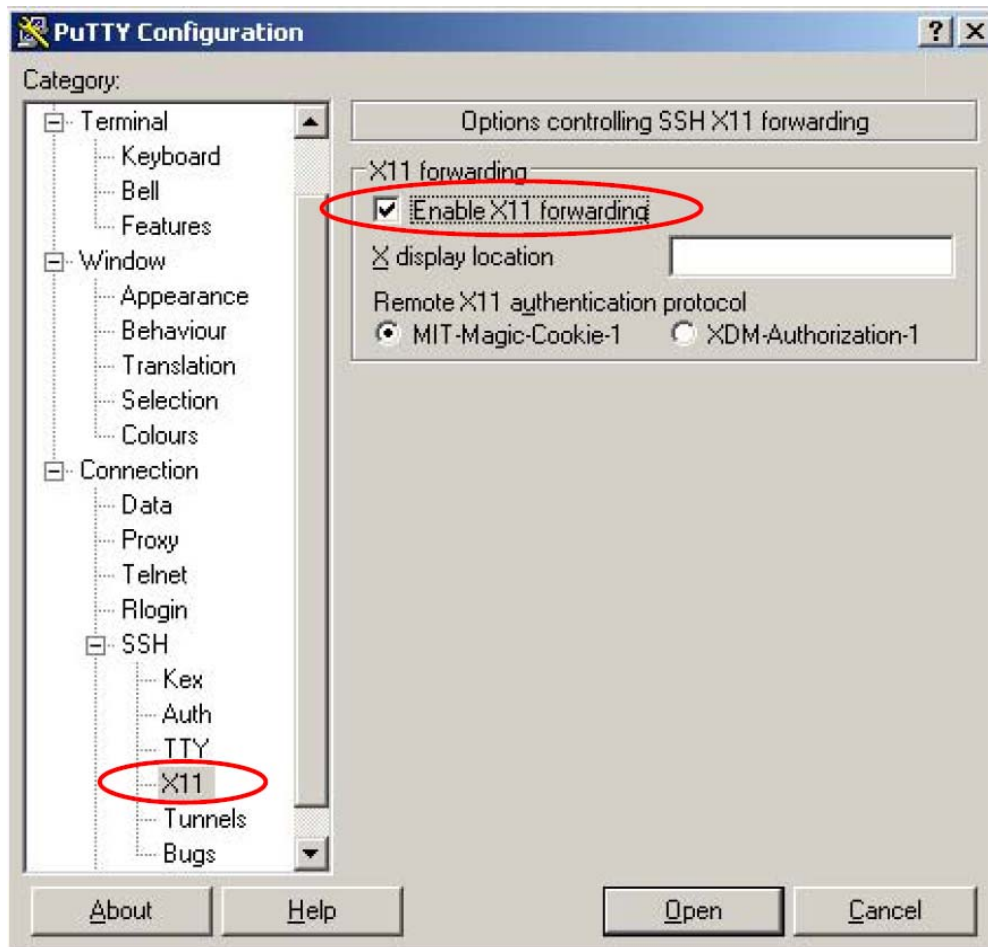
Step 2.

Launch putty and SSH to ECE server ece3.ece.arizona.edu



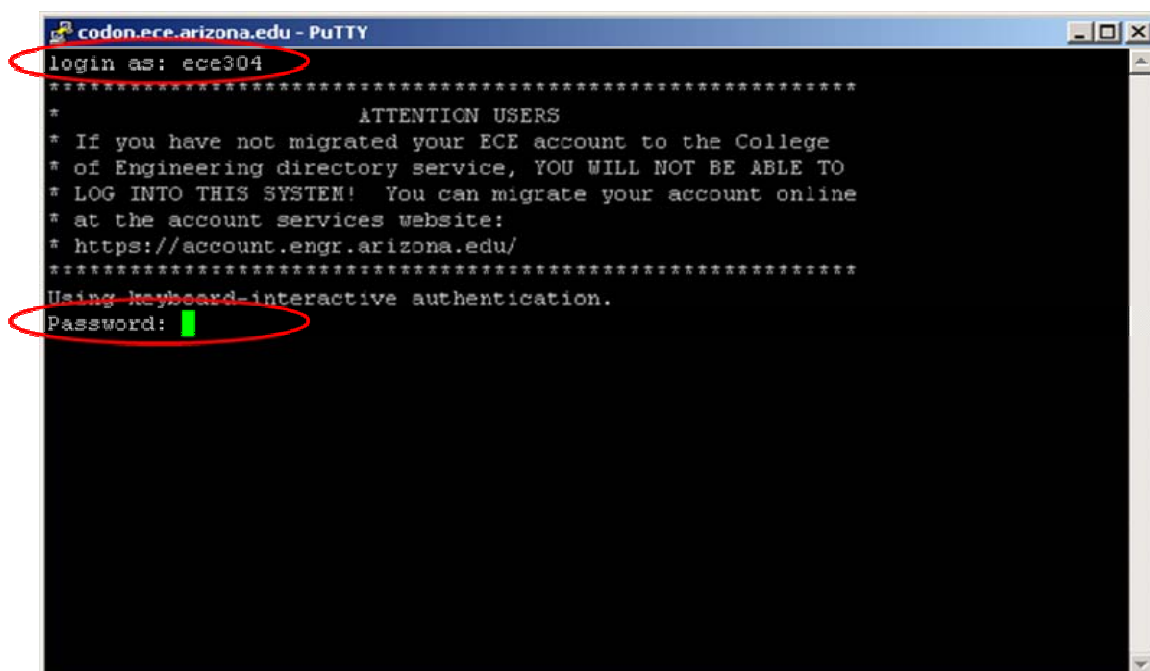
Step 3.

***important*:** Enable X11 graphic connection before you logon.



Step 4.

Input your own ECE account and password to logon ECE server.



Step 5.

Run HSPICE in ECE server:

- (1). Save you HSPICE netlist file “xxx.sp” into your own folder.
- (2). Go to the folder in step 1.
- (3). Run Hspice:

>hspice xxx.sp > xxx.lis &

Note: You can use WinSCP to transfer files.

Step 6.

Download Xwindows Software: [Xming X Server](http://sourceforge.net/projects/xming/) before you launch WaveViewer Analyzer to observe waveform.

(Link: <http://sourceforge.net/projects/xming/>)

Step 7.

Make sure Xming is ready, and run WaveViewer Analyzer:

>wv

Step 8.

Import waveform file (.sw0 file, .tr file, .ac file, etc.) in WaveViewer Analyzer.

